

KS Shuttle valve

Home >> Products >> Directional control valve >> Other valve >> KS Shuttle valve:



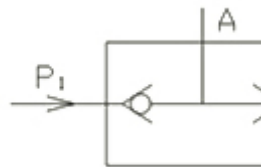
Product description:

Directional control valve product ----- the shuttle valve integrates 2 one-way valves. Usually, it is used high and low pressure output and automatic&manual equipments.

Ordering Code

KS	-L6
Series No	Joint Pipe Bore
KS ___ Shuttle Valve	M5:M5
series	L3:M10×1
	L6:G1/8"
	L8:G1/4"
	L10:G3/8"
	L15:G1/2"
	L20:G3/4"
	L25:G1"

Graphic symbol

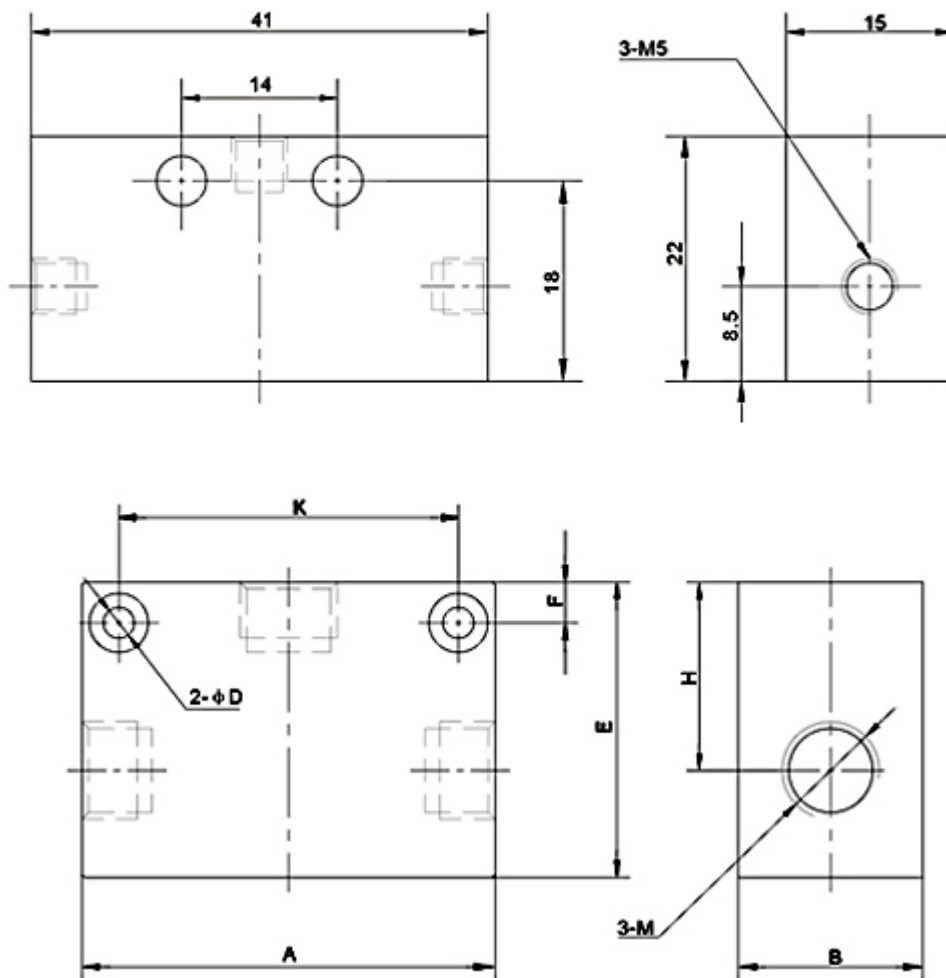


Specification

Model	KS-M5	KS-L3	KS-L6	KS-L8	KS-L10	KS-L15	KS-L20	KS-L25
Working Medium	Micron Filtered Air							
Joint Pipe Bore	M5	M10X1	G1/8	G1/4	G3/8	G1/2	G3/4	G1
Operating Temperature	0~60°C							
Working-Pressure	0.05~0.8Mpa							
Max. Pressure Resistance	1.2Mpa							

Overall Dimension

TYPE: KS-M5



Dimension Sheet

Model	Aperture	A	B	D	E	F	H	K	M
KS-3	3	38	18	3.6	26	4	16	20	M10×1
KS-6	6	56	25	4.8	40	9	26	36	M10×1(G1/8)
KS-8	8	56	25	4.8	40	9	26	36	M12×1.25(G1/4)
KS-10	10	70	34	7	50	10	32	48	M16×1.5(G3/8)
KS-15	15	70	34	7	50	10	32	48	M20×1.5(G1/2)
KS-20	20	95	50	7	75	10	48	72	M27×2(G3/4)
KS-25	25	95	50	7	75	10	48	72	M33×2(G1)

Company Information:

Company Name:

Ningbo Lida Pneumatic Kit Co.,Ltd.

Website:<http://www.cn-lida.com>

Address:

Eighth Quarter, Zhongxing East Road, Xikou, Fenghua, Zhejiang, China.

Post-code:315500

Contact Person:Lacey Liu exporting manager

Phone:

Telephone:0086-574-88846388

Fax:0086-574-88846288

Email:export@nblida.cn