

K34 Hand-draw valve

Home >> Products >>Directional control valve >> Manually and mechanically actuated valve >> K34 Hand-draw valve



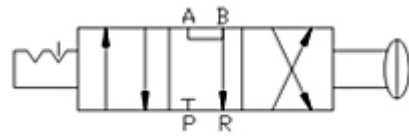
Product description:

This directional control valve product ----- K34 Hand-draw valve is 3/4 valve. The advantages are: light operation force, good seal, and long working life.

Ordering Code

K	34	R5
Series Code	Position and Way Number	Specification Code
	34:Three-position Five-way	R5:Hand-draw

Graphic symbol

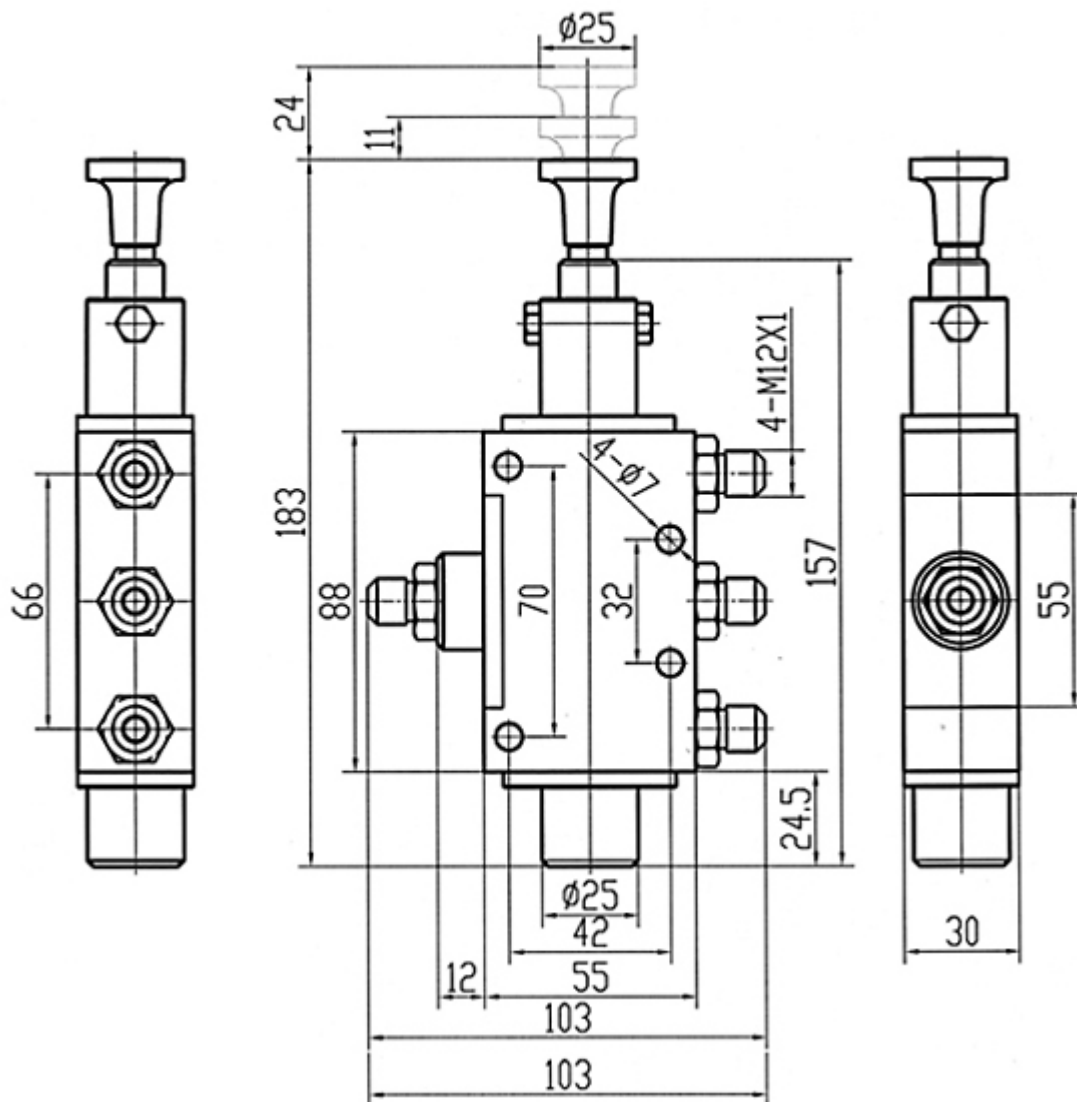


Specification

Model	K34R5
Working Medium	Micron Filtered Air
The Position Counting	Three-position Four-way
Joint Pipe Bore	M12X1
Operating Temperature	0~60℃
Working-Pressure	0~0.8Mpa

Overall Dimension

TYPE: K34R5-8



Company Information:

Company Name:

Ningbo Lida Pneumatic Kit Co.,Ltd.

Website:<http://www.cn-lida.com>

Address:

Eighth Quarter, Zhongxing East Road, Xikou, Fenghua, Zhejiang, China.

Post-code:315500

Contact Person:Lacey Liu exporting manager

Phone:

Telephone:0086-574-88846388

Fax:0086-574-88846288

Email:export@nblida.cn