

K25 Hand pull valves

Home >> Products >> Directional control valve >> Manually and mechanically actuated valve >> K25 Hand pull valves



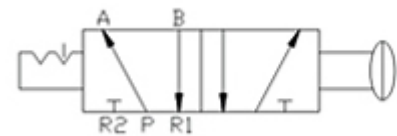
Product description:

This proportional directional control valve product ----- hand pull valves of K25 Hand-draw valve is 2/5 valve. The advantages are: light operation force, good seal, and long working life.

Ordering Code

K	25	R5	-	08
Specification Code	Position and Number	WaySpecification Code	Joint Bore	Pipe
	25:Two-position Five-way	R5:Hand-draw	08:G1/4"	

Graphic symbol

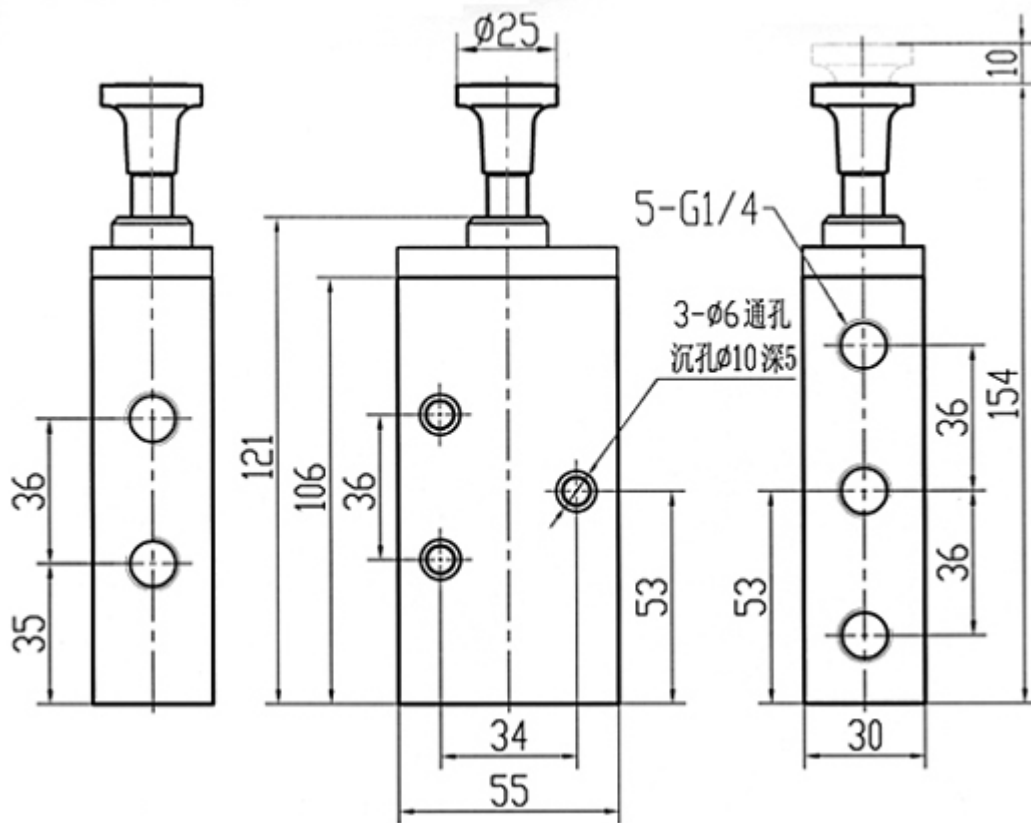


Specification

Model	K25R5-8
Working Medium	Micron Filtered Air
The Position Counting	Three-position Four-way
Joint Pipe Bore	G1/4
Operating Temperature	0~60°C
Effective Sectional Area	16mm ² (Cv=0.89)
Working-Pressure	0~0.8Mpa

Overall Dimension

TYPE: K25R5-8



Company Information:

Company Name:

Ningbo Lida Pneumatic Kit Co.,Ltd.

Website:<http://www.cn-lida.com>

Address:

Eighth Quarter, Zhongxing East Road, Xikou, Fenghua, Zhejiang, China.

Post-code:315500

Contact Person:Lacey Liu exporting manager

Phone:

Telephone:0086-574-88846388

Fax:0086-574-88846288

Email:export@nblida.cn