

200 series 3V 4V

Home >> Products >> Directional control valve >> 3V 4V solenoid valve and air valve >> 200 series 3V 4V



Product description:

It is the most common and popular directional control valve ----- micro solenoid valve. We have the standard design and whole sizes. Our 3V 4V solenoid and air valve have good quality. We manufacture by CNC machine. The valve shaft was manufactured specially by an advanced machine. We control every step of the producing, to insure the good quality. They can work at least 10,000,000 times without any problem.

Ordering Code

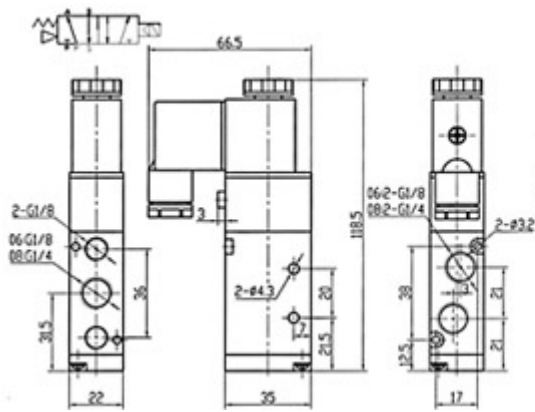
4V	1	10	-	08	B	AC220V
Specification code	Series	Coil and Places		Joint	Joint Pipe	Standrd
4V: Two(Three)-position	NO	10: Single-head		Pipe	Form	Voltage
Five- way Solenoid Valve	200	Double-position		Bore	Blank:Pipe	Dc12v
4a: Two(Three)-position	Series	20: Double-head		06:G1/8	connection	Dc24v
Five- way Pneumatic		Double-position		08:G1/4	type	Ac24v
Control Valve		30: Double-head			B:Plate	50Hz/60Hz
3A: Two-position three-		Double-position			connection	Ac110v
way Solenoid Valve		Close Type			Type	50Hz/60Hz
3A: Two-position Three-		30E: Double-head				Ac220v
way Pneumatic Control		Double-position				50Hz/60Hz
Valve		Exhaust Type				Ac380v
		30P:Double-head				50Hz/60Hz
		Double-position				
		Pressure Type				

Specification

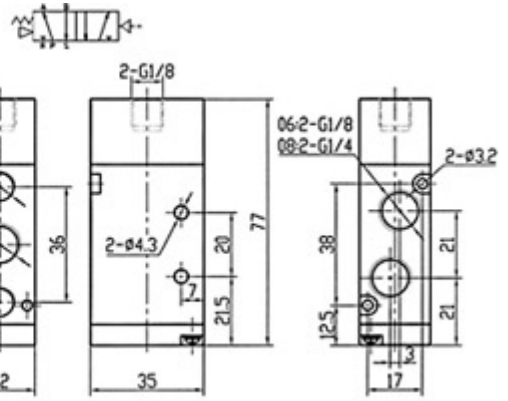
Model	3V210-06 3V220-06 3V210-08 3V220-08 4V210-06 4V220-06 4V230C-06 4V230E-06 4V230				
	3A210-06 3A220-06 3A210-08 3A220-08 4A210-06 4A220-06 4A230C-06 4A230E-06 4A230				
Working Medium	40 Micron Filtered Air				
Motion Pattern	Inner Guide Type				
Joint Pipe Bore	进气=出气= G1/8 进气=出气=G1/4 进气=出气=排气= G1/8				
The Position Counting	Two-position Three-way		Two-position Five-way Three-position Five		
			Two-position Five-way Three-position Five		
Operating Temperature	5~50°C (41-122°F)				
Effective Sectional Area	14mm ² (Cv=0.78)	16mm ² (Cv=0.89) 9mm ² (Cv=0.5)	5.5mm ² (Cv=0.31)	5mm ² (Cv=0.28)	12mm ² (Cv=0.6)
Working Pressure	0.15~0.8Mpa				
Max. Pressure Resistance	1.2Mpa				
Power Consumption	AC:4.5VA DC:3W				
Protection Class	IP65 (DIN40050)				
Insulation	F 级				
Wiring Form	Lead Wire or Connector Type				
Voltage Range	±10%				
Highest Action Frequency	5 Cycle/Sec		5 Cycle/Sec	3 Cycle/Sec	
Shortest Excitation Time	0.05 Second				

Model	4V210-08	4V220-08	4V230C-08	4V230E-08	4V
-------	----------	----------	-----------	-----------	----

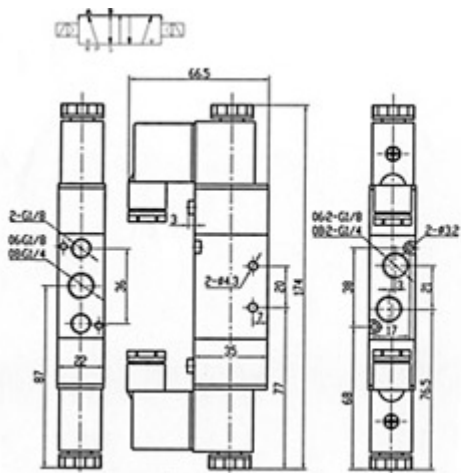
	4A210-08	4A220-08	4A230C-08	4A230E-08	4A
Working Medium	40 Micron Filtered Air				
Motion Pattern	Inner Guide Type				
Joint Pipe Bore	进气=出气= G1/4 排气= G1/8				
The Position Counting	Two-position Five-way	Five-way	Three-position Five-way	Two-position	
Operating Temperature	5~50°C (41-122°F)				
Effective Sectional Area	16mm ² (Cv=0.89)	5.5mm ² (Cv=0.31)	5mm ² (Cv=0.28)	12mm ² (Cv=0.67)	
Working Pressure	0.15~0.8Mpa				
Max. Pressure	1.2Mpa				
Resistance					
Power Consumption	AC:4.5VA	DC:3W			
Protection Class	IP65 (DIN40050)				
Insulation	F 线				
Wiring Form	Lead Wire or Connector Type				
Voltage Range	±10%				
Highest Action Frequency	5 Cycle/Sec		3 Cycle/Sec		
Shortest Excitation Time	0.05 Second				
Overall Dimension					
4V210			4A210		



4V220



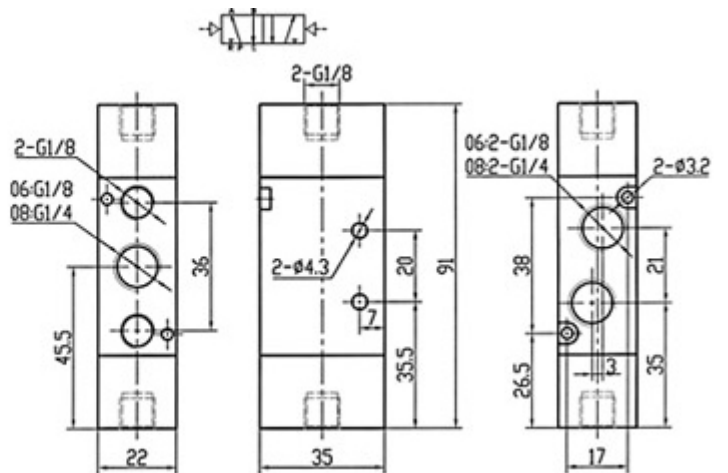
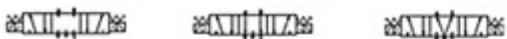
4A220



4V230C

4V230E

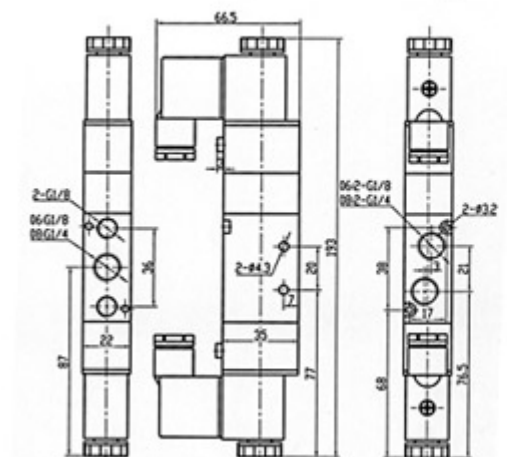
4V230P



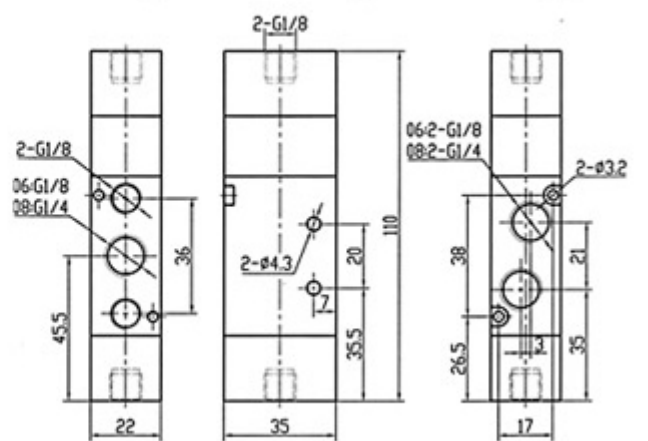
4A230C

4A230E

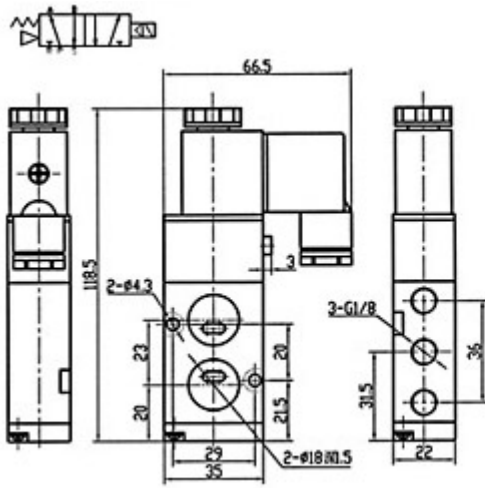
4A230P



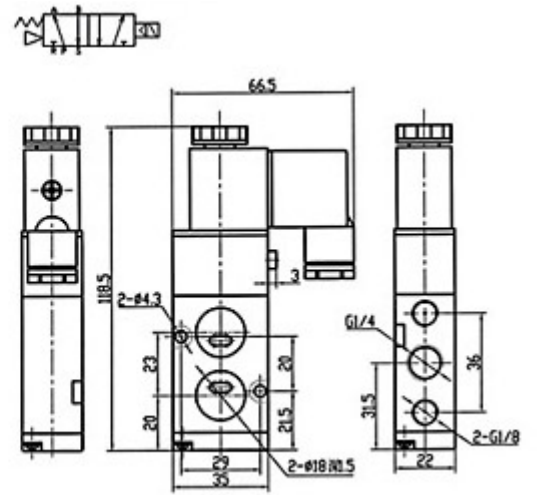
4V210-06B



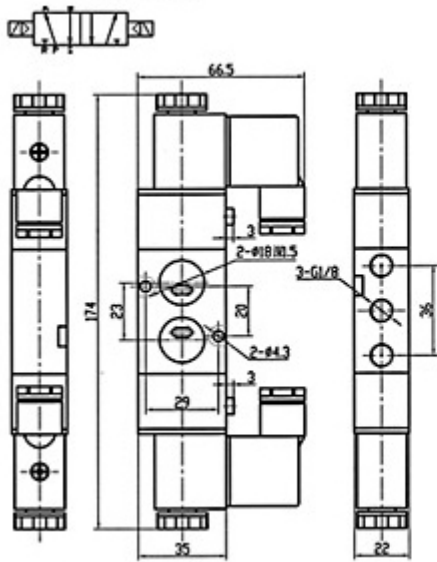
4A210-08B



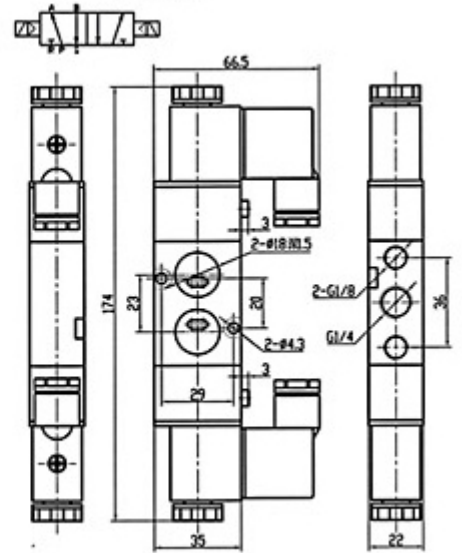
4V220-6B



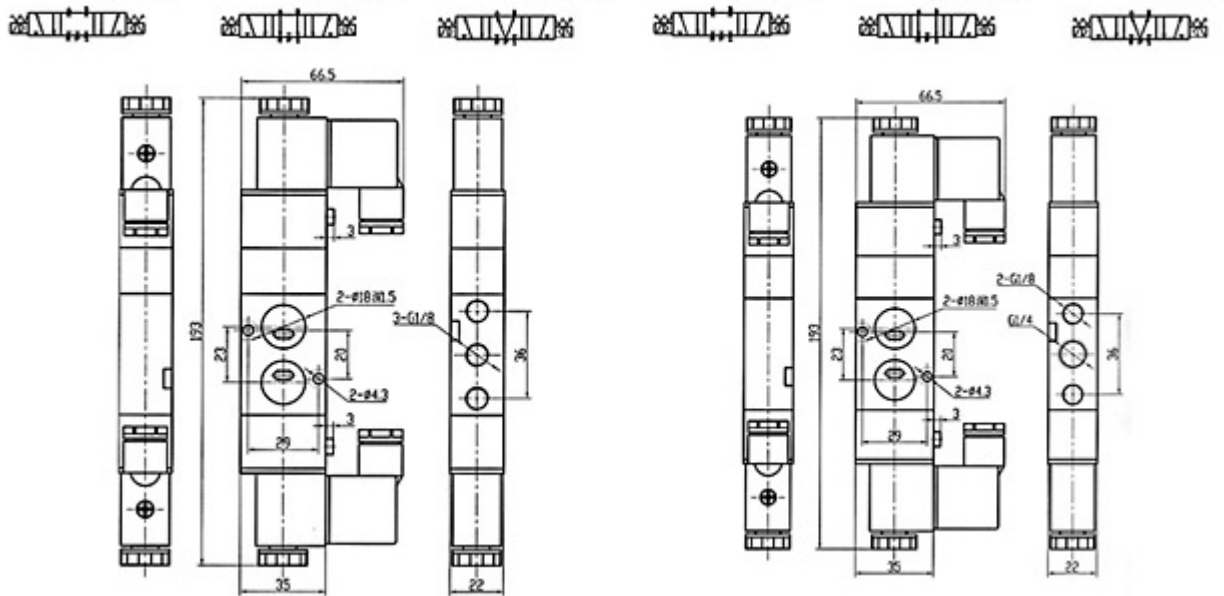
4A220-08B



4V230C-06B 4V230E-06B 4V230P-06B



4A230C-08B 4A230E-08B 4A230P-08B

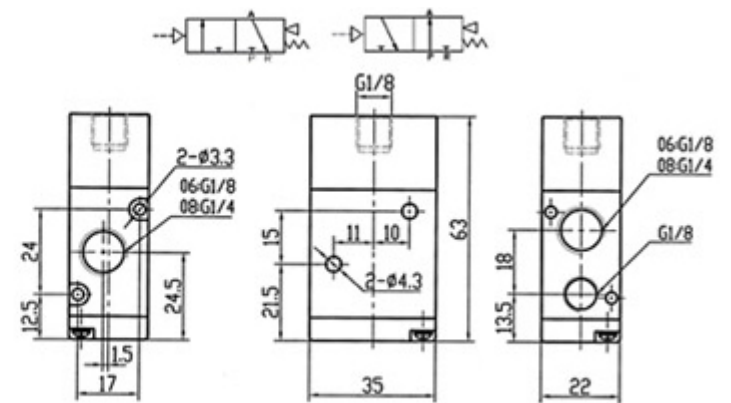
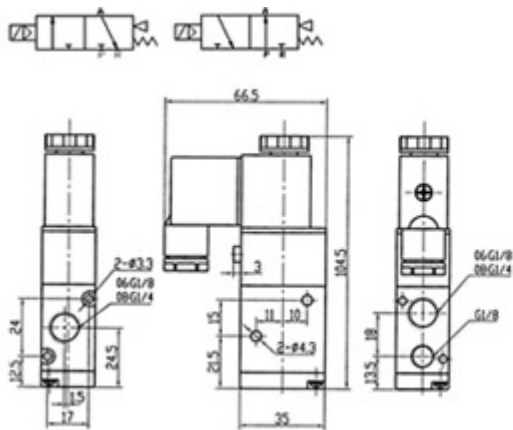


3V210NC

3V210NO

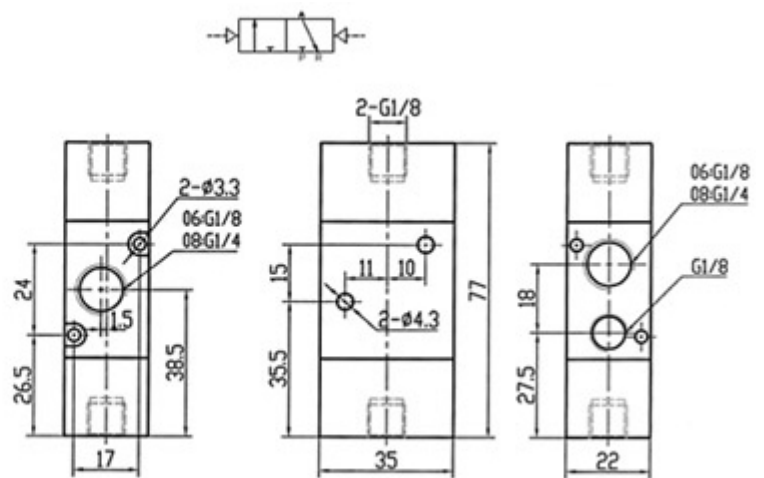
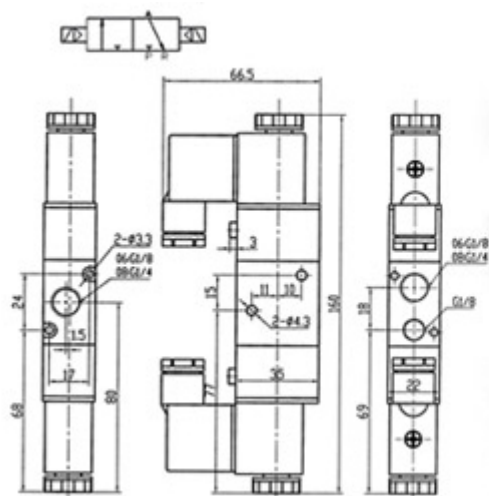
3A210NC

3A210NO



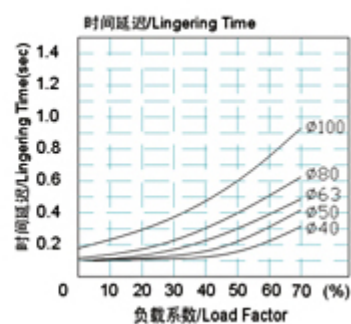
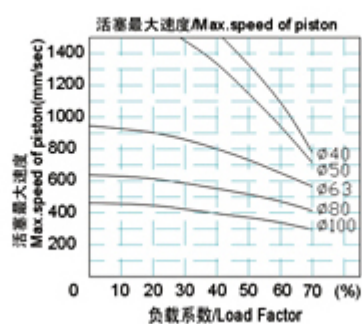
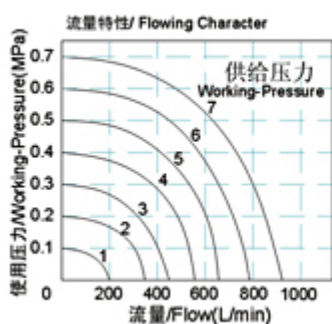
3V220

3A220

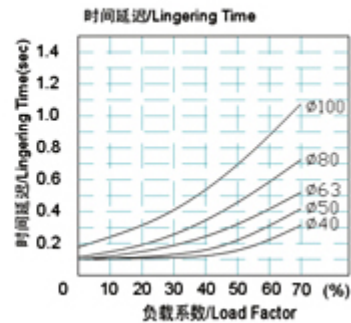
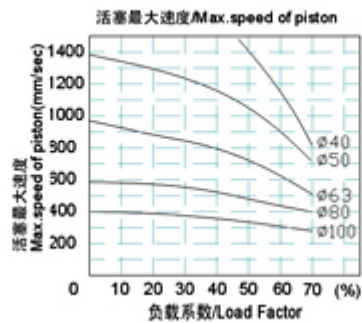
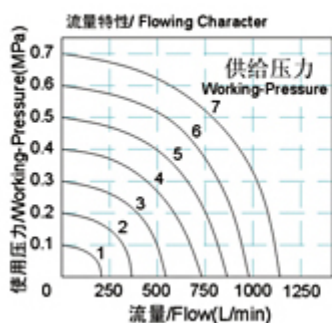


Flowing Character

200系列-06/200 Series-06



200系列-08/200 Series-08



Test Condition

Pressure:05MPa

Tube:PU(Pipe)8×6 (Bore):6mm

Fitting

4V210-06:PC8-01

4V210-08:PC8-02

Load Factor:Load Factor=(Load / Cylinder theoretical output power) ×100%

Cylinder Stroke:300mm

Value model:4V200series

Company Information:

Company Name:

Ningbo Lida Pneumatic Kit Co.,Ltd.

Website:<http://www.nblida.cn>

Address:

Eighth Quarter, Zhongxing East Road, Xikou, Fenghua, Zhejiang, China.

Post-code:315500

Contact Person:Joy Qian exporting manager

Phone:

Telephone:0086-574-88846388

Fax:0086-574-88846288

Email: export@nblida.cn